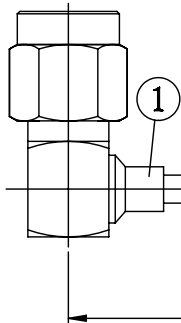


NO.	COMPONENTS	IMPEDANCE
1	SMA MALE RIGHT ANGLE	50 OHM
2	.085" TIN PLATED SEMI-RIGID CABLE (TIN PLATED RG405)	50 OHM
3	SMA FEMALE FOR BULKHEAD	50 OHM

SMA MALE  
RIGHT ANGLE

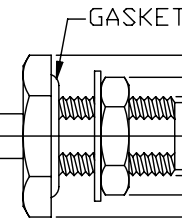


2

L

SMA FEMALE  
FOR BULKHEAD

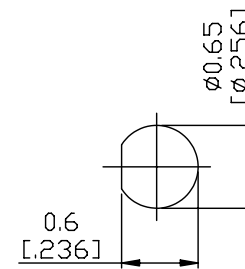
3



1/4-36UNS-2A  
0.8 [.315] HEX  
1.1 [.433] HEX

0.575  
[.226]

JYE BAO P/N	L CM (INCH)
A39A85-85T-15	15 (5.906)
A39A85-85T-30	30 (11.811)
A39A85-85T-50	50 (19.685)
A39A85-85T-100	100 (39.370)
A39A85-85T-150	150 (59.055)
A39A85-85T-200	200 (78.740)
A39A85-85T-XXX	CUSTOM LENGTH IN CM



MOUNTING HOLE

LENGTH TOLERANCE IS ±1.5% OR ±10MM, WHICHEVER IS GREATER.	<b>JYE BAO CO., LTD.</b> TAIPEI TAIWAN	
	DESCRIPTION	CABLE ASSEMBLY SMA PLUG R/A TO SMA JACK FOR BULKHEAD
	JYE BAO DRAWING NO.	A39A85-85T-XXX